

Welcome

Meet the Teacher

Year 1





Year 1 Teaching Team



Miss Underdown



Mrs Johnson & Mrs Staines

Mon, Tues, Weds

Thurs, Fri

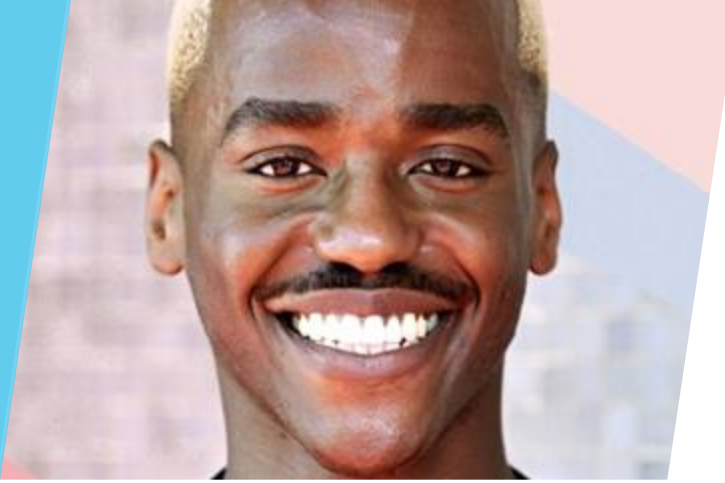


Miss Dunne

Miss Siseman



Mrs Bryant



Class names

▶ 1U will be **Gatwa Class**

▶ 1JS will be **Samuel Class**



Vision

Children come first; they are our future

- We build strong **positive** relationships and trust; as a highly inclusive school we celebrate individuality and promote well-being through **excellent** pastoral provision.
- We promote a thirst for knowledge and a love of learning by teaching an ambitious knowledge rich curriculum that inspires curiosity and is relevant for our community.
- We empower all children through our high expectations to be tolerant, respectful, **determined** and **independent** active members of a diverse local, national and global community.
- We encourage all children to achieve in all areas so that they can reach their potential.

School timings

- ▶ **Attendance:** It is essential to be in as much as possible to maximise learning and give children the best chances at success and integration. As our attendance policy quotes:

Staplehurst School is committed to the continuous raising of achievement of all of our pupils. Regular attendance is critical if our pupils are to be successful and benefit from the opportunities presented to them.

One of our basic principles is to celebrate success. Good attendance is fundamental to a successful and fulfilling school experience. Staplehurst School actively promotes 100% attendance for all of our pupils and we use a variety of weekly, termly and annual awards, to promote good attendance and punctuality.

- ▶ Term starts (for children) on **Tuesday 3rd September**.
- ▶ Learning starts 8.35am, children should be in class at this time ready to begin.
- ▶ Pick up is from 3:15pm via the external classroom doors.



Expectations for September

At Staplehurst School, we show...



STAPLEHURST
SCHOOL

▶ Positivity

- ▶ A positive attitude to school and learning.
- ▶ Being kind and supportive to each other.

▶ Respect

- ▶ Showing respect to adults and each other.
- ▶ Being polite and well behaved in the classroom and around school.

▶ Independence

- ▶ Being independent and motivated with learning.

▶ Determination

- ▶ Being determined and resilient learners.
- ▶ 100% effort at all times.

▶ Excellence

- ▶ Setting a good example to the rest of the school.
- ▶ Demonstrating excellence in behaviour, attitude and learning.



Rewarding pupils showing our PRIDE Values



STAPLEHURST
SCHOOL

- ▶ PRIDE Points
 - Non-uniform days for house colour winners
 - Pride equipment at lunchtime
- ▶ Verbal and written praise
- ▶ Certificates in Celebration Assembly
- ▶ Prizes e.g. for 30 reads, improved attendance

focus on the good



Reading Records



STAPLEHURST
SCHOOL

- ▶ Reading records should be brought in every day, with home reading recorded in them. They will be checked twice weekly (Tuesday and Friday). Pupils aim for **30 reads** rewards

- ▶ Books will be changed on Tuesday and Friday if an adult has signed to say the current book has been read fully



Messages and other admin

- Messages should go via the year group email, or urgent messages e.g. pickup or appointments via the office.

year1@staplehurst.kent.sch.uk

- School dinners should be booked in advance on Scopay



School uniform, PE Kit and other equipment.

- ▶ In September pupils need to return in winter uniform.
- ▶ Summer and winter uniform as per policy. One pair of stud earrings only. Bows in navy or school yellow and no bigger than the palm of your child's hand. Hair below shoulders needs to be tied back.
- ▶ Blue P.E. t-shirt, blue or black shorts, plimsolls or trainers for outside, bare feet or plimsolls for inside.
- ▶ Tracksuits or sweatshirts (blue or black) may be worn when cold. No leggings. Sweatshirts should not have a hood. Hair must be tied back, and no jewellery should be worn.
- ▶ If your child is unable to take part in P.E, please send in a note to explain why.



What will we be learning about this year? A broad and balanced curriculum.

- A transition curriculum will be taught in year 1, to allow time for exploring time during 4 of the afternoons.
 - *What are our school grounds like? (Geography)*
 - *What is the United Kingdom? (Geography)*
 - *How have homes changed in our Grandparents' lives? (History)*
 - *How has transport changed over time? (History)*
 - *Which places in the world are hot and cold? (Geography)*
 - *How have holidays changed at the seaside? (History and Geography)*
 - Curriculum themed weeks (STEM Week, World Week, Keeping Healthy Week)



Example Year 1 Timetable

▶ Week A

W 1	8.35 -8.55	9.00 – 9.50	9.50 – 10.25	10.25 – 10.45	10.45 – 11:10	11:15 – 12:10	12.15 – 1.30	1.30 – 2.10	2.10 – 2.50	2.50-3.15	3:1 5
Monday	Linked Provision	English	Phonics	Handwashing and Break	Assembly Same day feedback	Maths and fluency	Lunch & Hand Washing	Register Geography Input	Continuous Provision	Get ready for home and story	Dismissal
Tuesday	Linked Provision	English	Phonics		Assembly Same day feedback	Maths and fluency		Register Science Input	Continuous Provision	Get ready for home and story	
Wednesday	Linked Provision	English	Phonics		Assembly Same day feedback	Maths and fluency		Register PSHE	Continuous Provision	Get ready for home and story	
Thursday	Linked Provision	English	Phonics		Assembly Same day feedback	Maths and fluency		Register Get changed for PE	PE	Get ready for home and story	
Friday	Linked Provision	English	Phonics		Celebration Assembly	Maths and fluency		Register Music	Continuous provision	Get ready for home and story	

Week B

W 2	8.35 -8.55	9.00 – 9.50	9.50 – 10.25	10:25 = <u>10:45</u>	10.45 – 11:10	11:15 – 12:10	12.15 – 1.30	1.30 – 2.15	2.10 – 2.50	2.50-3.15	3:1 5
Monday	Linked Provision	English	Phonics	Handwashing and Break	Assembly Same day feedback	Maths and fluency (get changed for PE)	Lunch & Hand Washing	Register PE	Library	Get ready for home and story	Dismissal
Tuesday	Linked Provision	English	Phonics		Assembly Same day feedback	Maths and fluency		Register Geography Input	Continuous Provision	Get ready for home and story	
Wednesday	Linked Provision	English	Phonics		Assembly Same day feedback	Maths and fluency		Register PSHE	Continuous Provision	Get ready for home and story	
Thursday	Linked Provision	English	Phonics		Assembly Same day feedback	Maths and fluency		Register Science input	Continuous Provision	Get ready for home and story	
Friday	Linked Provision	English	Phonics		Celebration Assembly	Maths		Register Art	Art	Get ready for home and story	



Homework



- ▶ Set on Purple Mash (an online learning platform)
-Logins sent in September
- ▶ 20 minutes max.
- ▶ Focus on consolidation of key concepts taught. Homework should not be overly challenging with the intention to offer opportunity to practise, increase confidence and boost speed/stamina of working.
- ▶ To be handed out on a Friday and handed back in by Tuesday. Completion will be expected.
- ▶ Children also need to be reading every night.
- ▶ Please remember to fill in the reading record. Pupils can aim for **30 reads** rewards.



Ways to help your child at home

- ▶ Practise number bonds to 10
- ▶ Regular reading (aim for 30 reads).
- ▶ Playing on Numbots (logins from September).
- ▶ Ensuring homework is completed and handed in on time.
- ▶ Visiting the library to research topics.
- ▶ When using internet research, aiding children in finding key points.
- ▶ Visiting places of interest.
- ▶ Support pupils with holiday learning tasks.
- ▶ Helping to ensure your child arrives at school on time every day.



PHONICS SCREENING



STAPLEHURST
SCHOOL

- ▶ Phonics Screening takes place in June.
- ▶ Further information will be provided on Phonics Screening and other assessments later in the year.



Things to look forward to



STAPLEHURST
SCHOOL

- ▶ High quality, engaging learning experiences every day
- ▶ An opportunity to continue Child Initiated time
- ▶ Structured mornings including Early Morning Activities to settle children in
- ▶ Themed weeks e.g. STEM, World Week
- ▶ Art and D.T days
- ▶ Trips and visits
- ▶ Christmas performance

Questions



Communication



- ▶ Parents can share messages and key information (non-urgent) via the school office or at the end of the day with the class teacher.
- ▶ Updates and minor issues can be discussed at pickup.
- ▶ Should you require a meeting to discuss an issue please inform your teacher in advance and a mutually convenient time will be arranged.
- ▶ Parents' evenings are held 2 x per year to discuss your child's learning.
- ▶ Key information about the school is posted on our website, including: the weekly newsletter; school times and term dates; events and announcements; curriculum information and policies and procedures.
- ▶ The newsletter is published weekly and sent to parent weekly via SCOPAY and published on our website by 12 noon on Monday during term time.
- ▶ Please telephone us to communicate brief information about your child that the school needs to know in an emergency, e.g., to let us know that you will be late collecting your child. We ask parents to telephone the school on 01580 891765.
- ▶ The school office is open between 8:30am to 4:00pm, during term-time. At all other times there is an answering service available to take your message.
- ▶ Whilst email is preferable
- ▶ **attendance@staplehurst.kent.sch.uk**, telephone calls are appropriate to notify us that your child will be absent from school
- ▶ There are times when we feel that we would like to say something about the service or treatment that we receive. If you feel you need to complain, then please follow the procedure outlined here:
- ▶ In the first instance you should speak to your child's class teacher. If you are still dissatisfied, please contact the phase leader /or the deputy headteacher as soon as you can to make an appointment. If the matter cannot be resolved, please contact the headteacher. If you remain dissatisfied with the outcome, you should follow the school's Complaints Procedure, which is set out in the school Complaints Policy. The Complaints Policy is available on our website.



Communication Systems for Parents