

**Staplehurst School Curriculum Overview**  
**Year 1: 2025-26**

Autumn 1	Autumn 2	Spring 1	Spring 2	Summer 1	Summer 2
<p><b>English:</b> We shall be receiving an unusual visitor (Beegu) to our school. Using our first book 'Beegu', we will be learning to write simple sentences to retell the story. We will also explore the use of adjectives to describe Beegu.</p> <p><b>Maths: Place Value (within 10)</b>, including sorting and counting objects, recognising numbers as words, comparing numbers and counting forwards and backwards within 10.</p> <p><b>Geography:</b> <i>What are our school grounds like?</i></p> <p><b>Science:</b> <i>Animals including humans</i></p>	<p><b>English:</b> In this term we will be exploring traditional tales in particular Rapunzel. We will create our own version of a fairy tale and use adjectives in our writing.</p> <p><b>Maths: Addition and Subtraction</b> including part-whole models, writing number sentences, number bonds within 10, number bonds to 10, fact families and addition and subtraction within 10.</p> <p><b>Shape</b> including recognising and sorting 2D and 3D shapes.</p> <p><b>Geography:</b> <i>What is the United Kingdom?</i></p> <p><b>Science:</b> <i>Animals, including humans.</i></p> <p><b>PSHE:</b> <i>Health and</i></p>	<p><b>English:</b> We will read the book 'Letters for Greenpeace' and write our own letter for a mysterious animal spotted in the school grounds, asking questions to find out what it could be.</p> <p><b>Maths: Place Value</b> including counting within 20, understanding numbers 10-20, finding one less and more, the number line to 20 and comparing and ordering numbers to 20.</p> <p><b>Addition and Subtraction</b> including adding and subtracting within 20, understanding doubles and related facts.</p> <p><b>History:</b> <i>How has shopping changed since in our</i></p>	<p><b>English:</b> 'The Naughty Bus' will visit our classroom, and we will investigate the chaos it caused and plan our own adventures!</p> <p>We will explore how transport has changed over the years and how this affects our lives today in terms of where we go on holiday and the food we eat.</p> <p><b>Maths: Place Value</b> including counting from 20 to 50, counting by groups of ten, recognising groups of tens and ones and estimating on a number line.</p> <p><b>Length and Height</b> including measuring length using objects and in centimetres.</p> <p><b>Mass and Volume</b> including measuring and comparing mass,</p>	<p><b>English:</b> We will look at the story of 'Polonius the Pit Pony' and explore his adventures with a travelling family. We will then create our own adventure story.</p> <p><b>Maths: Multiplication and Division</b> including counting in 2s, 5s and 10s, making arrays and recognising and adding equal groups.</p> <p><b>Fractions</b> including recognising and finding half and a quarter of an object, shape or quantity</p> <p><b>Position and direction</b> including ordinal numbers and describing position using left, right, forward, backwards, above and below.</p> <p><b>Geography:</b> <i>Which places in the world are</i></p>	<p><b>English:</b> Our learning will continue this term as we study the British seaside. We will use 'The Lighthouse Keeper's Lunch' to write a problem story.</p> <p><b>Maths: Place Value</b> including counting from 50-100, partitioning into tens and ones, finding one more and less, comparing numbers and the number line to 100.</p> <p><b>Money</b> including recognising coins and notes.</p> <p><b>Time</b> including days of the week, months of the year and telling the time to the hour and half hour.</p> <p><b>History:</b> <i>How has the UK coastline been used for leisure in the last 100 years?</i></p>

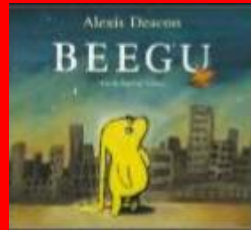
## Staplehurst School Curriculum Overview

### Year 1: 2025-26

<p><b>Art:</b> Nature sculptures</p> <p><b>PE:</b> Ball Skills, travelling and control</p> <p><b>Computing:</b> Exploring Purple Mash and technology outside of school</p> <p><b>French:</b> Animals</p> <p><b>Music:</b> My musical heartbeat</p> <p><b>PSHE:</b> Families and Relationships</p> <p><b>Continuous provision:</b> Communication and Language, Physical development, and Personal, social and emotional development.</p>	<p><b>Wellbeing</b></p> <p><b>RE:</b> What it means to be a Christian</p> <p><b>PE:</b> Dance, routines and sequences</p> <p><b>Computing:</b> Grouping and sorting</p> <p><b>Art:</b> Portraits</p> <p><b>French:</b> Animals</p> <p><b>Music:</b> Dance Sing and Play. Christmas performance rehearsing.</p>	<p><b>Grandparents' lives?</b></p> <p><b>Science:</b> Properties of Materials</p> <p><b>PSHE:</b> Keeping Safe</p> <p><b>RE:</b> Introduction to Islam</p> <p><b>PE:</b> Gymnastics, travelling and shape sequences</p> <p><b>Computing:</b> Lego Builders/Maze Explorers</p> <p><b>DT:</b> Healthy smoothies</p> <p><b>French:</b> Shapes</p> <p><b>Music:</b> Exploring sounds.</p>	<p>volume and capacity.</p> <p><b>History:</b> How has transport changed over time?</p> <p><b>Science:</b> Properties of Materials</p> <p><b>PSHE:</b> Citizenship</p> <p><b>RE:</b> Introduction to Islam</p> <p><b>PE:</b> Balance and coordination</p> <p><b>Computing:</b> Animated Story Books/Core Skills</p> <p><b>DT:</b> Sliding mechanisms</p> <p><b>French:</b> Shapes</p> <p><b>Music:</b> Learning to listen</p>	<p>hot and cold?</p> <p><b>Science:</b> Seasonal Change</p> <p><b>PSHE:</b> Economic wellbeing</p> <p><b>RE:</b> Islam Practices (Hajj)</p> <p><b>PE:</b> Athletics, agility and running skills</p> <p><b>Computing:</b> Spreadsheets/ Pictograms</p> <p><b>DT:</b> Investigating how to strengthen freestanding structures</p> <p><b>French:</b> Hobbies</p> <p><b>Music:</b> Having fun with improvisation</p>	<p><b>Science:</b> Plants</p> <p><b>PSHE:</b> Safety and the changing body</p> <p><b>RE:</b> Islamic Practices (inside the mosque)</p> <p><b>PE:</b> Racket skills, sending &amp; receiving and coordination</p> <p><b>Computing:</b> Coding</p> <p><b>Art:</b> Seascape collage</p> <p><b>French:</b> Hobbies</p> <p><b>Music:</b> Let's perform together</p>
---	--	---	---	--	--

**Staplehurst School Curriculum Overview**  
**Year 1: 2025-26**

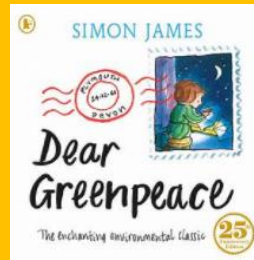
**ENGLISH TEXT**



**ENGLISH TEXT**



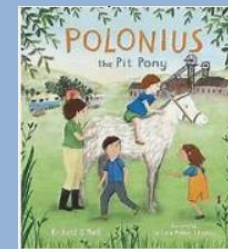
**ENGLISH TEXT**



**ENGLISH TEXT**



**ENGLISH TEXT**



**ENGLISH TEXT**

